

# Potency Test Report

Test Date	5/30/2022
Test Time	8:02:14

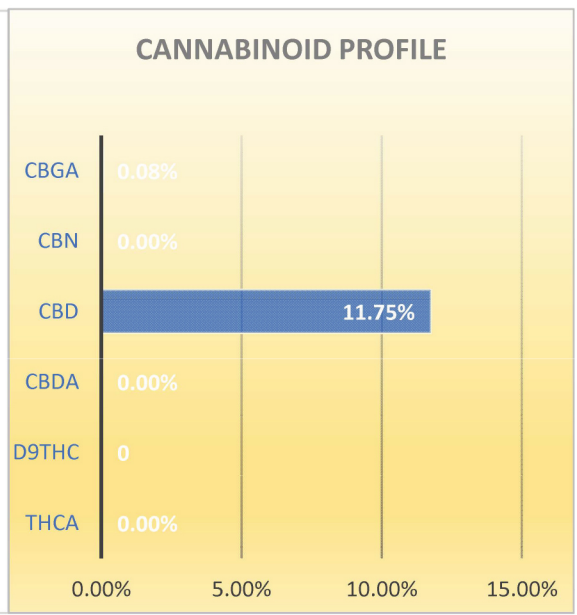
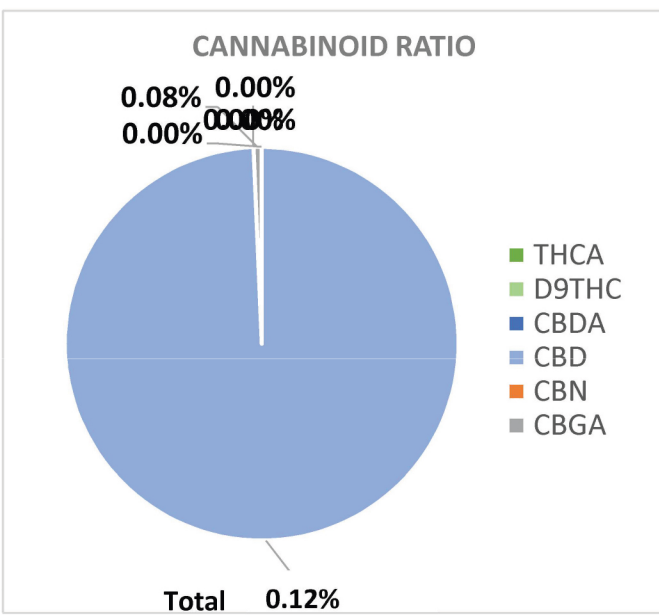
GPS lat	0	GPS long	0
BATCH	CA190601	HOS	0
		IMAGES	

Sample ID	ReAction
Operator	DH
Sample Type	Capsules
Type	1000mg
Sample Weight (mg)	110
Temperature	88.6
Notes	30 count
Weight: mg/g	1175

**SUMMARY**  
**TOTAL**  
**CBD mg/Unit**  
**1175**



THCA: ND	CBDA: ND
ΔD9THC ND	CBD: 11.75%
Total Potential Δ9THC: ND	Total Potential CBD: <b>0.12%</b>
Total THC: ND	Total CBD: 0.12%
CBN: ND	CBGA: 0.08%



Analyst Certification:

Chief Science Officer



NCIHPP Registered

# Potency Test Report

Test Date	4/23/2022
Test Time	12:21:25

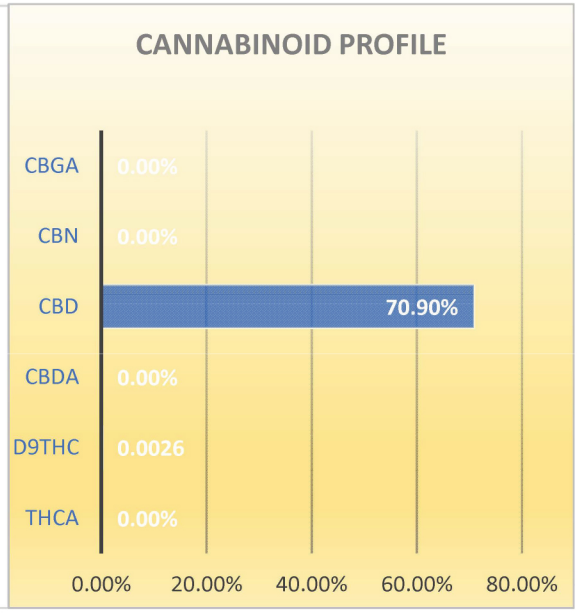
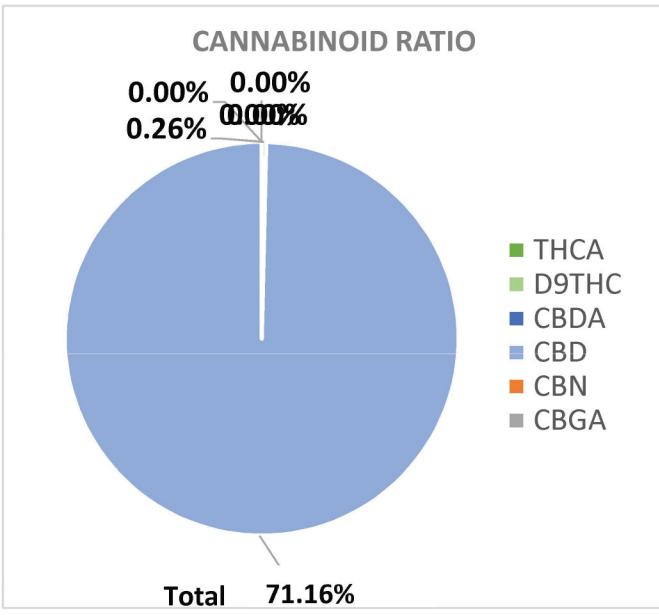
GPS lat	0	GPS long	0
HOA	0	HOS	0

IMAGES

Sample ID	SPD
Operator	DH
Sample Type	Custom
Strain	FSE Batch CR200417
Sample Weight (mg)	76;30
Temperature	85.7
Notes	0
Weight: mg/g	0.00



THCA: ND	CBDA: ND
Δ9THC 0.26%	CBD: 70.90%
Total Potential Δ9THC: 0.26%	Total Potential CBD: 70.90%
Total THC: 0.26%	Total CBD: 70.90%
CBN: ND	CBGA: ND



Analyst Certification:

Chief Science Officer



NCIHPP Registered

# Certificate of Analysis

Test Date 04/17/2022  
 Test Time 00:09:24



Sample ID ReAction Crude  
 Operator DH  
 Sample Type FSE Crude  
 Type Sample Jar  
 Sample Weight (mg) 73;30  
 Temperature 87.9  
 Notes Decarb  
 Weight: mg/g Batch CR200417

## Pesticides

Abamectin	NR	NR	Paclobutrazol
Bifenazate	NR	NR	Piperonyl Butoxide
Spinetoram	NR	NR	Dimethomorph
Etoxazole	NR	NR	Myclobutanil
Fenhexamid	NR	NR	Spinosyn (D)
Fonicamid	NR	NR	Spirotetramat
Fludioxonil	NR	NR	Thiamethoxam
Imidacloprid	NR	NR	Trifloxystrobin
Spinosyn (A)	NR	NR	Pyrethrin (R1)
	PPB	PPB	

## Microbials

Yeast	None Reported
Mold	None Reported
E. coli	None Reported
Coliform	None Reported
Aerobic Bacteria	None Reported
Enterobacteria	None Reported
	CFU/g

## Residual Solvents

Isopentane	<5ppm	<5ppm	Acetonitrile
Propane	<5ppm	<5ppm	Tetrahydrofuran
Acetone	<50ppm	<5ppm	Toluene
Isobutane	<5ppm	<5ppm	Choloroform
Ethanol	<5ppm	<5ppm	C-Terracholoride
n-Heptane	<5ppm	<5ppm	Benzene
n-Hexane	<5ppm	<10ppm	M-xylene
n-Butane	<5ppm	<10ppm	P-xylene
n-Pentane	<5ppm	<10ppm	O-xylene
2-Propanol	<5ppm		
	PPM	PPM	

## Heavy Metals

82 <b>Pb</b> Lead 207.2	0.00 PPM	48 <b>Cd</b> Cadmium 112.414	0.00 PPM
80 <b>Hg</b> Mercury 200.592	0.00 PPM	33 <b>As</b> Arsenic 74.922	0.00 PPM

IS 17025  
 ACCREDITED LABORATORY  
 Analyst Certification:  
  
 Chief Science Officer

