

Potency Test Report

Test Date	5/30/2022
Test Time	13:31:33

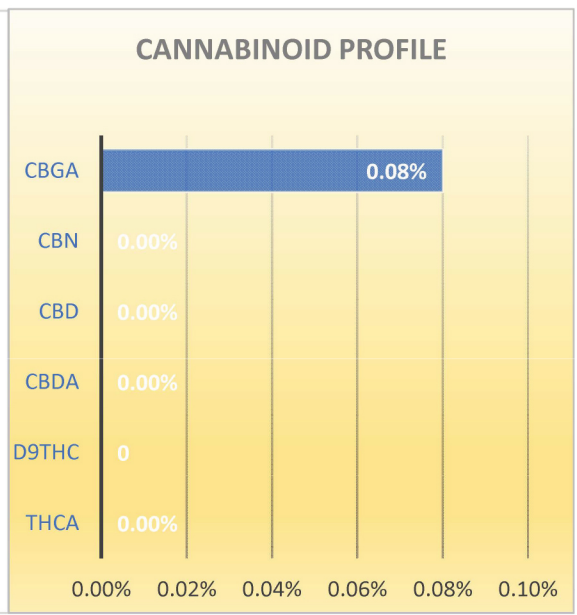
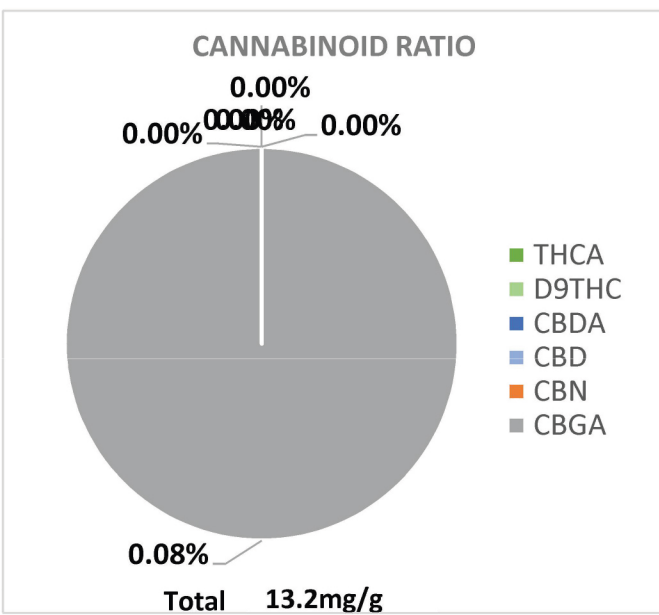
GPS lat	0	GPS long	0
BATCH	TB1190601	HOS	0
IMAGES			

Sample ID	ReAction Tincture
Operator	DH
Sample Type	Blue Razz
Type	1000mg
Sample Weight (mg)	520;10
Temperature	89.9
Notes	30ml
Weight: mg/g	1320

SUMMARY
TOTAL
CBD mg/Unit
1320



THCA: ND	CBDA: ND
ΔD9THC ND	CBD: 13.2mg/g
Total Potential Δ9THC: ND	Total Potential CBD: 13.2mg
Total THC: ND	Total CBD: 13.2mg/
CBN: ND	CBGA: 0.08%



Analyst Certification:

Chief Science Officer



NCIHPP Registered

Potency Test Report

Test Date	4/23/2022
Test Time	12:21:25

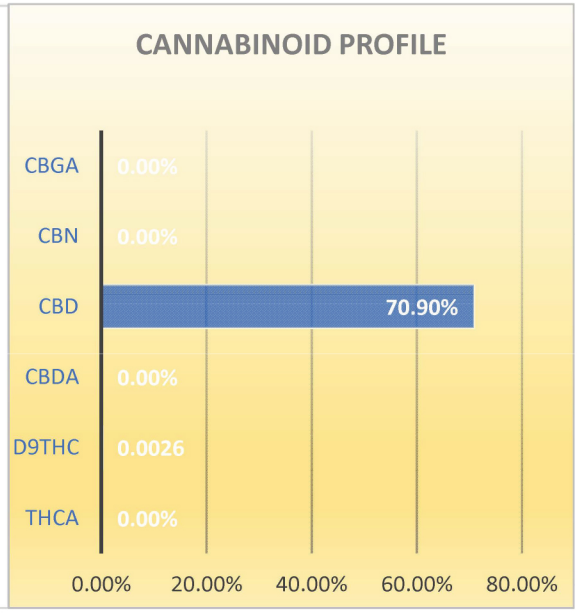
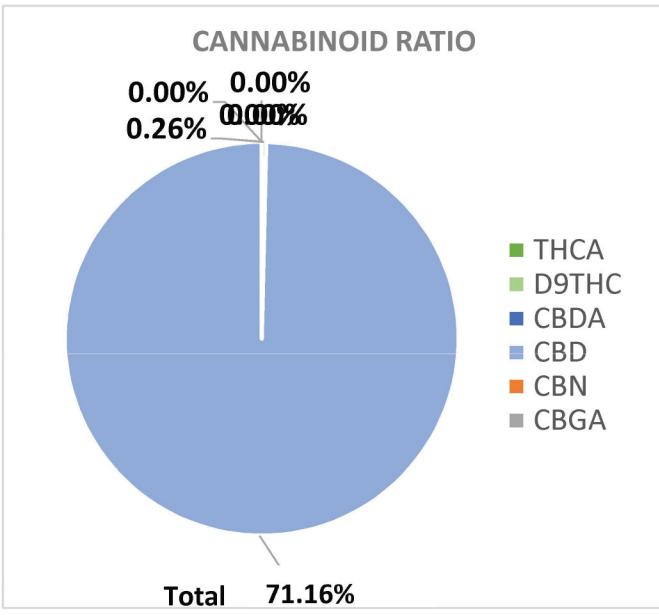
GPS lat	0	GPS long	0
HOA	0	HOS	0

IMAGES

Sample ID	SPD
Operator	DH
Sample Type	Custom
Strain	FSE Batch CR200417
Sample Weight (mg)	76;30
Temperature	85.7
Notes	0
Weight: mg/g	0.00



THCA: ND	CBDA: ND
Δ9THC 0.26%	CBD: 70.90%
Total Potential Δ9THC: 0.26%	Total Potential CBD: 70.90%
Total THC: 0.26%	Total CBD: 70.90%
CBN: ND	CBGA: ND



Analyst Certification:

[Signature]

Chief Science Officer



NCIHPP Registered

Certificate of Analysis

Test Date 04/17/2022
 Test Time 00:09:24



Sample ID ReAction Crude
 Operator DH
 Sample Type FSE Crude
 Type Sample Jar
 Sample Weight (mg) 73;30
 Temperature 87.9
 Notes Decarb
 Weight: mg/g Batch CR200417

Pesticides

Abamectin	NR	NR	Paclobutrazol
Bifenazate	NR	NR	Piperonyl Butoxide
Spinetoram	NR	NR	Dimethomorph
Etoxazole	NR	NR	Myclobutanil
Fenhexamid	NR	NR	Spinosyn (D)
Fonicamid	NR	NR	Spirotetramat
Fludioxonil	NR	NR	Thiamethoxam
Imidacloprid	NR	NR	Trifloxystrobin
Spinosyn (A)	NR	NR	Pyrethrin (R1)
	PPB	PPB	

Microbials

Yeast	None Reported
Mold	None Reported
E. coli	None Reported
Coliform	None Reported
Aerobic Bacteria	None Reported
Enterobacteria	None Reported
	CFU/g

Residual Solvents

Isopentane	<5ppm	<5ppm	Acetonitrile
Propane	<5ppm	<5ppm	Tetrahydrofuran
Acetone	<50ppm	<5ppm	Toluene
Isobutane	<5ppm	<5ppm	Choloroform
Ethanol	<5ppm	<5ppm	C-Terracholoride
n-Heptane	<5ppm	<5ppm	Benzene
n-Hexane	<5ppm	<10ppm	M-xylene
n-Butane	<5ppm	<10ppm	P-xylene
n-Pentane	<5ppm	<10ppm	O-xylene
2-Propanol	<5ppm		
	PPM	PPM	

Heavy Metals

82 Pb Lead 207.2	0.00 PPM	48 Cd Cadmium 112.414	0.00 PPM
80 Hg Mercury 200.592	0.00 PPM	33 As Arsenic 74.922	0.00 PPM

IS 17025
 ACCREDITED LABORATORY
 Analyst Certification:

 Chief Science Officer

