

Potency Test Report

Test Date	3/12/2022
Test Time	8:34:47

GPS lat	0	GPS long	0
BATCH	PS190906	HOS	0

IMAGES

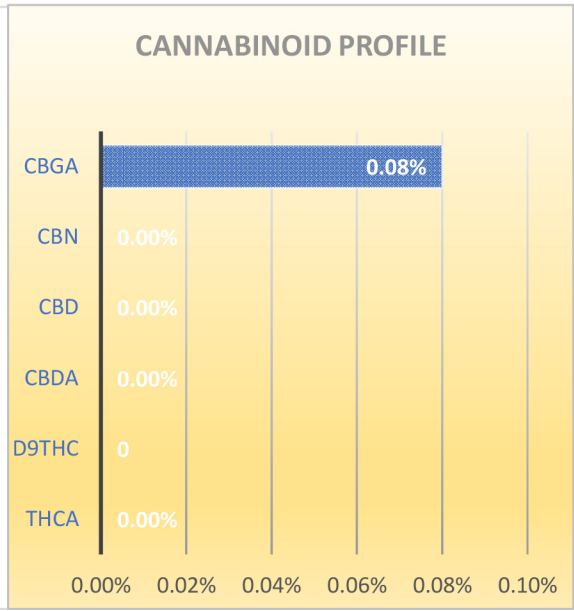
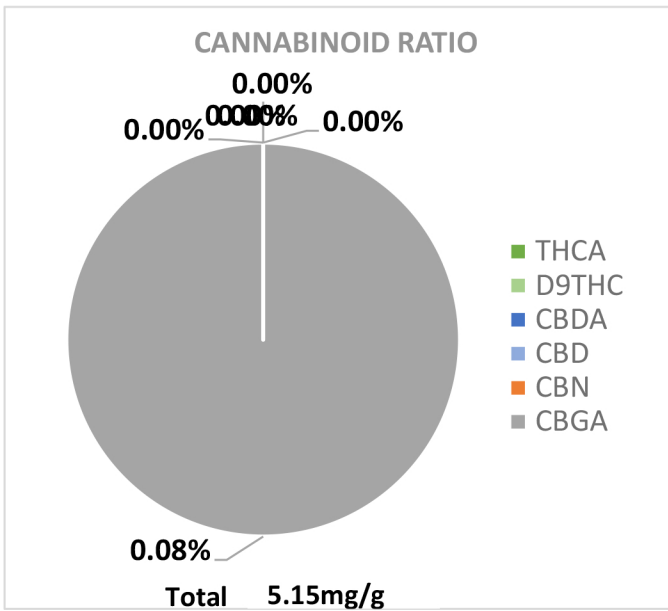
Sample ID	ReAction PETS
Operator	DH
Sample Type	Syringe
Type	500mg
Sample Weight (mg)	111
Temperature	87.3
Notes	1ml
Weight: mg/g	515

SUMMARY

TOTAL
CBD mg/Unit
515



THCA:	ND	CBDA:	5.15mg/g
ΔD9THC:	ND	CBD:	5.15mg/g
Total Potential Δ9THC:	ND	Total Potential CBD:	ND
Total THC:	ND	Total CBD:	5.15mg/
CBN:	ND	CBGA:	0.08%



Analyst Certification:

Chief Science Officer



NCHPP Registered

Potency Test Report

Test Date	4/23/2022
Test Time	12:21:25

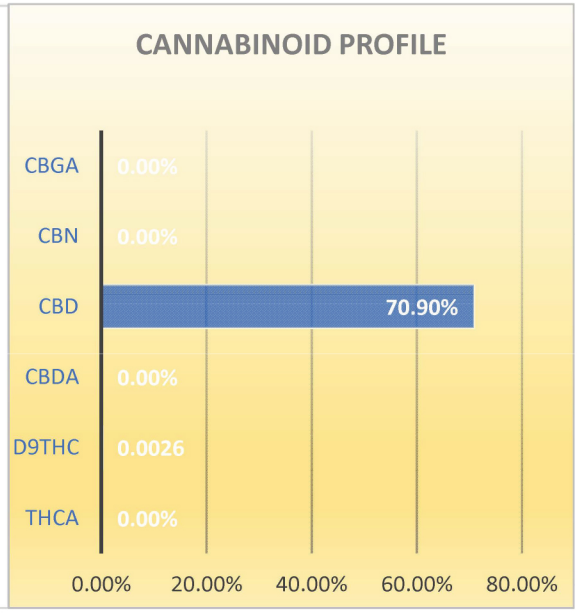
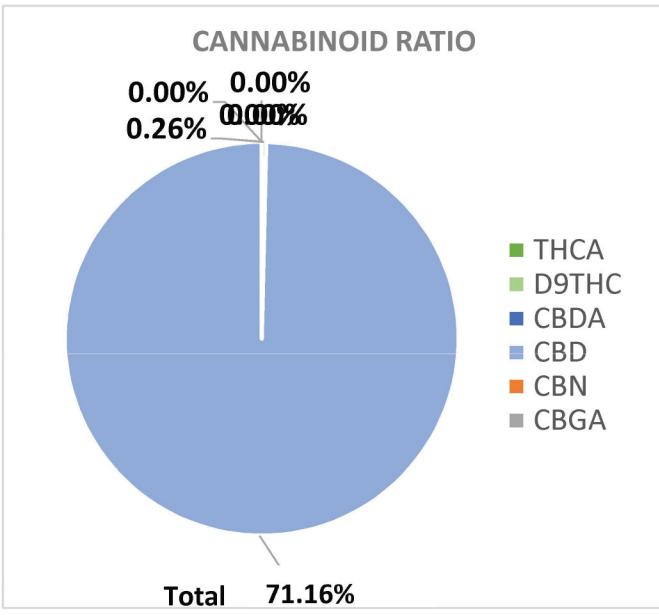
GPS lat	0	GPS long	0
HOA	0	HOS	0

IMAGES

Sample ID	SPD
Operator	DH
Sample Type	Custom
Strain	FSE Batch CR200417
Sample Weight (mg)	76;30
Temperature	85.7
Notes	0
Weight: mg/g	0.00



THCA: ND	CBDA: ND
Δ9THC 0.26%	CBD: 70.90%
Total Potential Δ9THC: 0.26%	Total Potential CBD: 70.90%
Total THC: 0.26%	Total CBD: 70.90%
CBN: ND	CBGA: ND



ISO 17025
ACCREDITED LABORATORY

Analyst Certification:

Chief Science Officer

MVP LABS



NCIHPP Registered

Certificate of Analysis

Test Date 04/17/2022
 Test Time 00:09:24



Sample ID ReAction Crude
 Operator DH
 Sample Type FSE Crude
 Type Sample Jar
 Sample Weight (mg) 73;30
 Temperature 87.9
 Notes Decarb
 Weight: mg/g Batch CR200417

Pesticides

Abamectin	NR	NR	Paclobutrazol
Bifenazate	NR	NR	Piperonyl Butoxide
Spinetoram	NR	NR	Dimethomorph
Etoxazole	NR	NR	Myclobutanil
Fenhexamid	NR	NR	Spinosyn (D)
Fonicamid	NR	NR	Spirotetramat
Fludioxonil	NR	NR	Thiamethoxam
Imidacloprid	NR	NR	Trifloxystrobin
Spinosyn (A)	NR	NR	Pyrethrin (R1)
	PPB	PPB	

Microbials

Yeast	None Reported
Mold	None Reported
E. coli	None Reported
Coliform	None Reported
Aerobic Bacteria	None Reported
Enterobacteria	None Reported
	CFU/g

Residual Solvents

Isopentane	<5ppm	<5ppm	Acetonitrile
Propane	<5ppm	<5ppm	Tetrahydrofuran
Acetone	<50ppm	<5ppm	Toluene
Isobutane	<5ppm	<5ppm	Choloroform
Ethanol	<5ppm	<5ppm	C-Terracholoride
n-Heptane	<5ppm	<5ppm	Benzene
n-Hexane	<5ppm	<10ppm	M-xylene
n-Butane	<5ppm	<10ppm	P-xylene
n-Pentane	<5ppm	<10ppm	O-xylene
2-Propanol	<5ppm		
	PPM	PPM	

Heavy Metals

82 Pb Lead 207.2	0.00 PPM	48 Cd Cadmium 112.414	0.00 PPM
80 Hg Mercury 200.592	0.00 PPM	33 As Arsenic 74.922	0.00 PPM

IS 17025
 ACCREDITED LABORATORY
 Analyst Certification:

 Chief Science Officer

